

EnvirAnode[®]

Long life cathodic protection

SAE offers innovative products that help you maintain the safety and integrity of your pipelines, while complying with industry regulations. The EnvirAnode[®] CP System for impressed current cathodic protection (ICCP) is a premium product aimed at applications that demand high performance, long life and environmental compliance. The EnvirAnode[®] offers the following advantages:

- Neutral Solution
- Long Lifecycle
- Effective Performance
- Cost Efficient
- Long life cycle (up to 2x)
- System can be engineered effectively to satisfy any requirement or soil condition
- Protects potable water (Impermeable solid backfill)
- EnvirAnode[®] CP system meets NEC/CEC electrical code
- Eliminates future abandonment issues

EnvirAnode[®] CP system is an effective impressed current cathodic protection (ICCP) solution. The EnvirAnode[®] allows for the installation of systems that cross through potable water aquifers. Due to the design of the system, carbon degradation only occurs in the Conducrete[®] column where the EnvirAnodes[®] are installed. To protect the aquifer from contamination, it is recommended that no EnvirAnodes[®] be installed 50 ft. above and below the aquifer. With a permeability of 1.9×10^{-8} cm/sec, the Conducrete[®] column will prevent the migration of contaminants within the well, ensuring potable water aquifers remain unharmed.

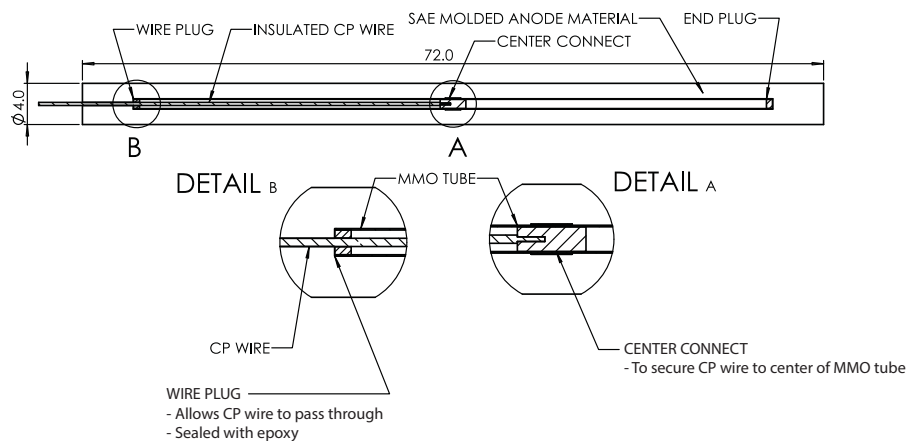


- The EnvirAnode® CP system is installed using similar tools and techniques as those used in traditional anode beds, though simpler as the vent pipe is not required.
- The electronic energy transfer mechanism of the EnvirAnode® gives extremely stable electrical operating performance in use, especially when compared to the electrolytic energy transfer utilized in traditional anode beds.
- The large active, low current density surface area of the EnvirAnode® column causes gas to be formed over the entire surface of the column, where it is easily absorbed into the soil before it can collect into concentrated pockets. By better managing the production and dissipation of out-gassing, vent pipes are not required in EnvirAnode® installations and the overall efficiency of the anode bed is increased.

Applications

- Pipelines
- Petroleum storage tanks
- Well casings

Product Specifications



A Global Player

SAE's innovative premium products and services solve the most challenging grounding, AC mitigation and cathodic protection issues. Founded in 1990, SAE continues to develop best-in-class electrical grounding systems and cathodic protection solutions. In addition to further developing its core business, SAE is currently focused on establishing international distribution for its products and services.