

The Why behind our TPG System

Install. Validate. Protect.

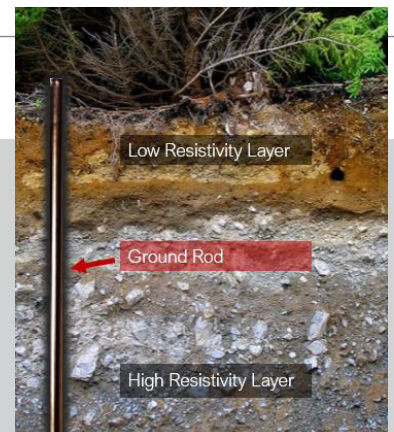
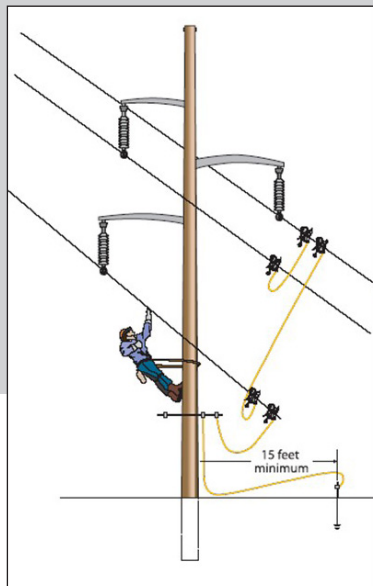
What are the 2 types of grounding we will look at?

Temporary Equipment Grounding (TEG):

refers to the connection of mobile equipment to ground, providing a low resistance path for fault current (inadvertent contact) or induced current (from nearby circuits when power is out). This ensures a fast response from safety protection devices, de-energizing mobile equipment.

Temporary Protective Grounding (TPG):

means grounding so that each employee is prevented from exposure to hazardous differences of electrical potential. These grounds must be placed at appropriate locations and in an appropriate manner.



There are many methodologies and electrode types available for Temporary Grounding.

To achieve an effective temporary ground, two conditions must be met:

1. Soil at location needs to be sufficiently low in resistance for the method used
2. You must install and **VERIFY** the ground resistance reading

Unfortunately, very few procedures require measured validation that the electrodes have reached low enough resistance to operate system protective devices during an inadvertent contact event.

Between rubber tires and traditional wood or composite outrigger pads, work vehicles will be isolated from ground. Typical temporary ground rods are often too shallow to be effective. System grounds may be too far away, corroded or stolen.



Grounding effectiveness is a combination of the **total surface area of electrode(s)** installed and the **resistivity** of the soils they are installed into.

The TPG SYSTEM How we can protect you

Swap your current insulating outrigger pads for our innovative **TPG Outrigger Pads** - it's a simple method to immediately gain conductive area to ground comparable to 6 ground rods.

 **TPG**
Outrigger Pads



 **TPG**
Grounding Screw



The **TPG Grounding Screw** is a re-usable electrode that can augment your grounding system and allow multiple connections. It is easily "power" installed and removed.

Published Date: April 2022

SAE
IT CAN BE DONE

705 733 3307 | 1 877 234 2502
sales@saeinc.com
saeinc.com