

CONDU MARINE



An Enhanced and Revolutionized Submersible Grounding Electrode

ConduMarine is a conductively molded, grounding electrode specifically designed for applications where water bodies near the utility structure provide the only viable grounding option.



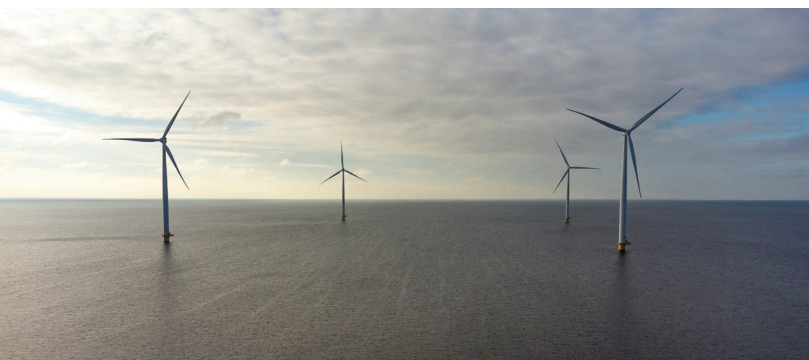


Increase the reliability of your utility network while reducing downtime with SAE's ConduMarine Grounding Electrode.

Cross Section



The ConduMarine is a conductively encased grounding electrode that improves grounding performance and network reliability over existing traditional methods.



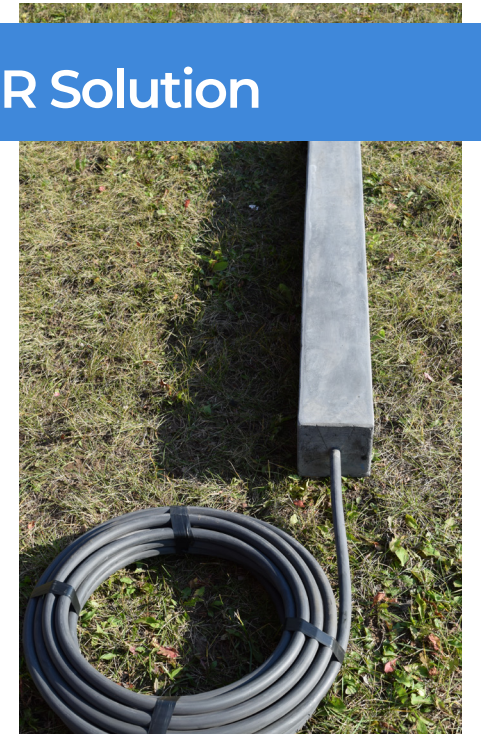
CONDU
 **MARINE**

The ConduMarine is ideally suited for use in situations where all grounding must take place in the water. The density of the material allows the ConduMarine to sink when placed into the body of water.

ConduMarine | The UNDERWATER Solution

By using the corrosion resistant ConduMarine grounding system compared to the system in traditional use today, you will benefit from:

- 1 Better asset protection and reliability** by ensuring protection devices function as designed even in challenging locations
- 2 Lowest lifecycle cost** due to the use of long lasting ConduCrete and high silicon cast iron rods
- 3 Improved safety** due to effective and consistent grounding
- 4 Improved asset performance** with high surge tolerance and low impedance

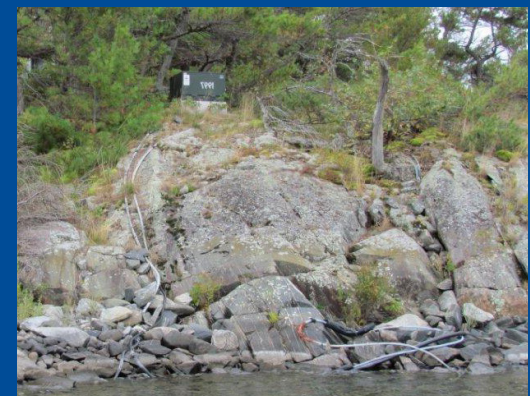


SAE

Simple & Efficient Installation System




CONNECT WIRE



DROP IN WATER



ConduMarine Collection	
WEIGHT	80 lb + wire
APPLICATION	Grounding in swamps, ponds, lakes
CONNECTION	Bare ground wire to RWU at post
DIMENSIONS	4' long x 5" x 5"
MATERIAL	Conductive, cementitious, molded material
INSTALLATION TIME	2 minutes

Published Date: October 2022

The ConduMarine will save you time and money ...
providing effective equipment grounding in the
most challenging conditions.



705 733 3307 | 1 877 234 2502
sales@saeinc.com
saeinc.com